

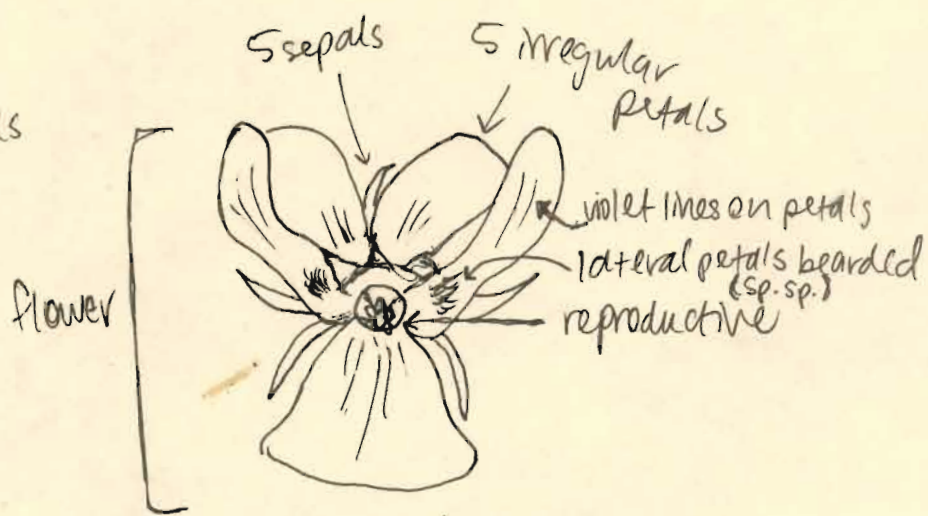
5 petals, 5 sepals — presence of blind sac & even many connate basally  
 basal & cauline, palmately net-veined leaves, entire  
 stipulate  
 ● flr. is irregular  
 1 pistil / style / ovary / stigma — many ovules — sup. ovary  
 many stamens / anthers  
 5 — no oricle (ear)  
 roots w/ horizontal rhizome

**Violaceae**  
*Viola canadensis*  
 Tail-white violet  
 rdral habitat

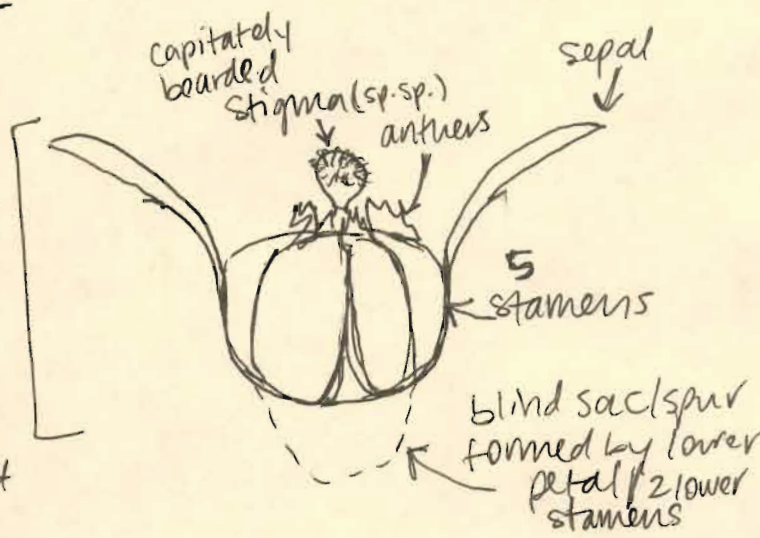
flower white in center w/  
 yellow base & violet outer petals  
 glabrous leaves



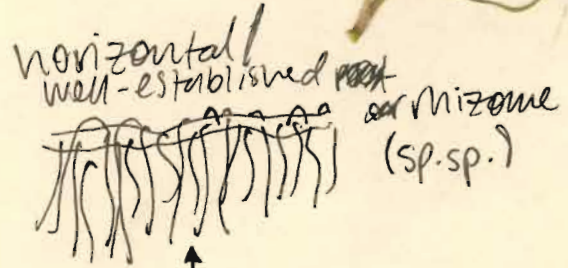
stipule  
 membr.  
 lance-acum.  
 whitish  
 (sp.sp.)



reproductive  
 1 pistil



leaves  
 cordate at  
 base (&  
 clasping)



horizontal  
 well-established ~~root~~ rhizome  
 (sp.sp.)  
 this means it's  
 variety canadensis  
 & not variety rugulosa

